

Understanding Broad Resilience Needs in Oklahoma

State Director, Annie Mack Vest, CFM



Agenda

- Importance of resilience in disaster management
- Oklahoma's Disaster History and the Federal Disaster Process
- The use of FEMA mitigation funding in Oklahoma
- How our agency is using tools and technology

Resilience

Resilience is the capacity of individuals, communities, businesses, institutions, and governments to adapt to changing conditions and to prepare for, withstand, and rapidly recover from disruptions to everyday life, such as hazard events.

Importance of Resilience in Disaster Management

Why

- Incorporating resilience into disaster management is not just about responding more effectively to disasters; it's about proactively shaping a future where communities are less vulnerable and more capable of bouncing back from the challenges they face.

How

- **Enhances Community Preparedness and Recovery**
- **Reduces Economic Losses and Saves Lives**
- **Supports Sustainable Development and Environmental Conservation**

Oklahoma Ranks 4th in Major Disaster Declarations

- Tornadoes and Straight-Line Winds
- Flooding
- Ice Storms
- Blizzards and Snowstorms
- Wildfires
- Drought
- Earthquakes
- Manmade (Terrorism, Cybersecurity)
- Other (Pandemics, etc.)

The Federal Disaster Process

When an emergency or disaster event **overwhelms** State and local resources, the **Governor** can request **Federal assistance** through a Presidential declaration.

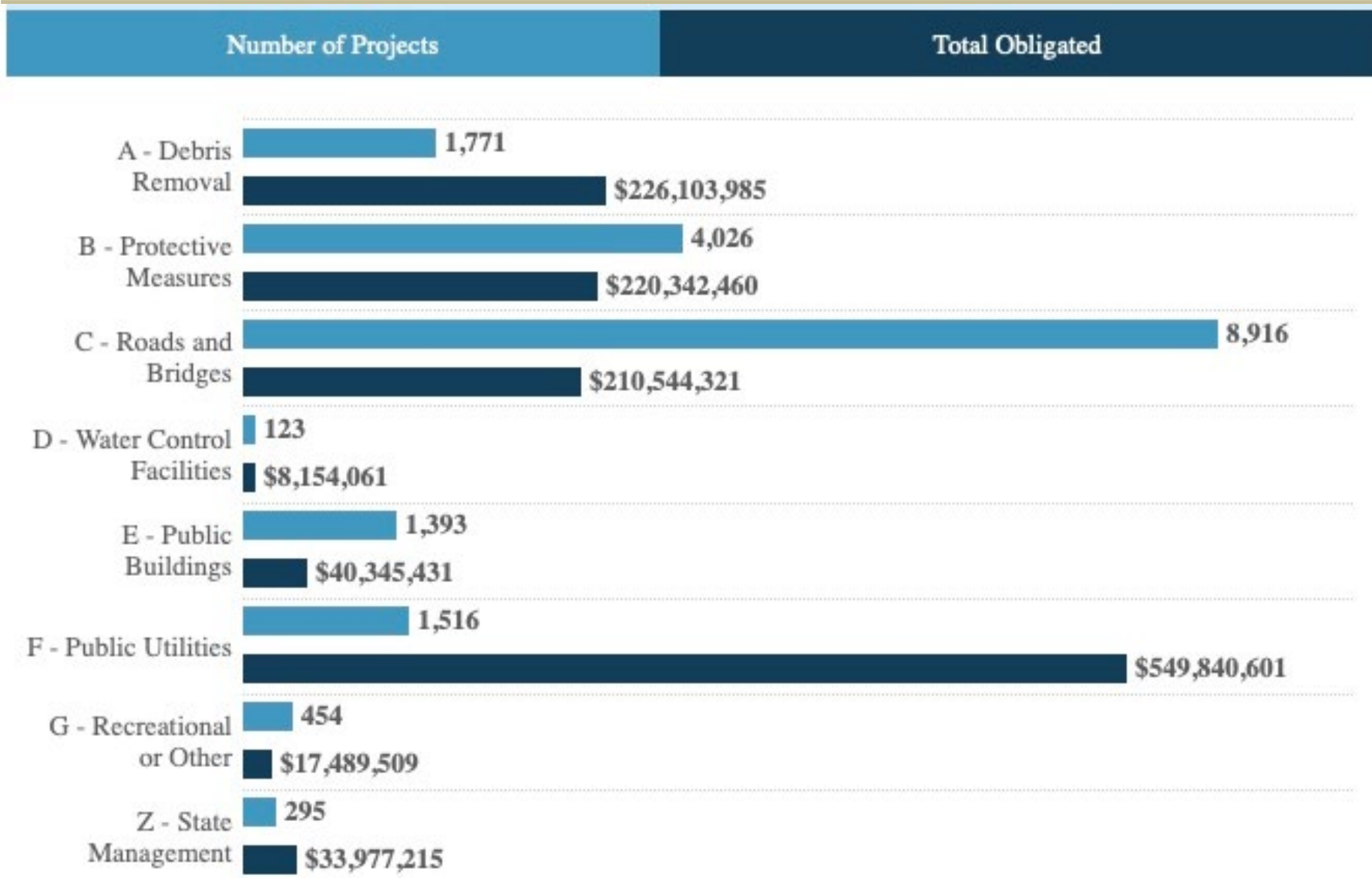
The process is ground up.

- **Damages** have to be assessed.
- **Damage indicators** must be met in each county and statewide.
- Local authorities have to **declare** a *State of Emergency*.
- The **Governor** has to **request** the Presidential declaration.
- **FEMA Region VI** has to approve the request before it lands on the President's desk.

Presidential Disaster Declarations in Oklahoma

Incident Category	Total Disasters (By Category)	Incident Subcategory	
Fire	4	Fire	4
Flood	22	Flood	22
Tornado	12	Tornado	12
Winter Weather*	8	Severe Ice Storm	8
Other*	2	Biological	1
		Human Cause	1
Severe Storm	46	Severe Storm	46
Grand Total			94

Public Assistance Funding in Oklahoma



Disasters in Oklahoma Since 2003

**Total Major Disaster
Declarations**

46

**Majors greater than
\$20mm**

17

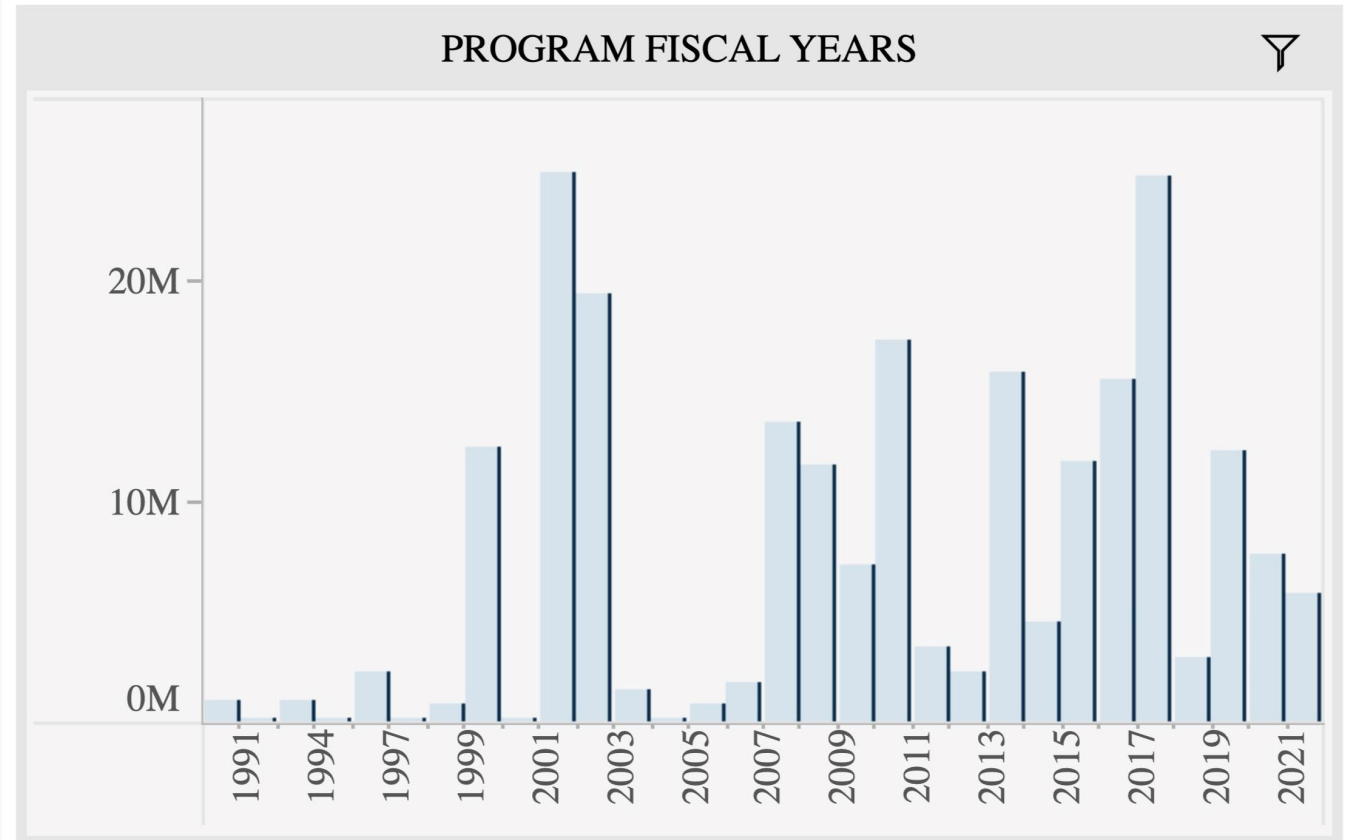
37.0% of Total

**Current Statewide Indicator for the Public Assistance
Program is just over \$7 million in damages.**

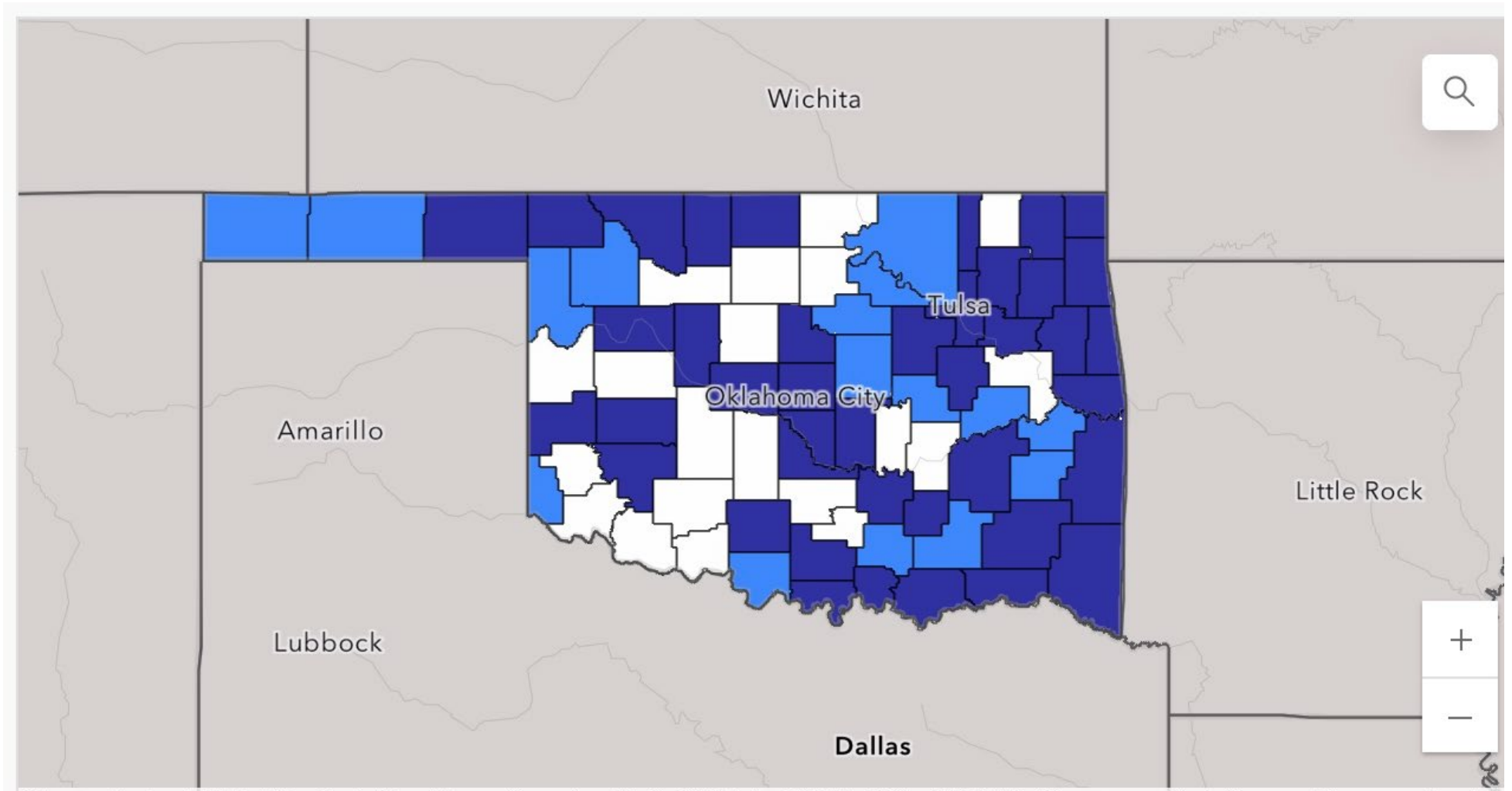
	Average Funding	Average Projects	Average Applicants	Average Counties
Majors greater than \$20mm	\$ 83,166,111	761	148	33.3
Majors less than \$20mm	\$ 6,105,775	191	51	12.5

Hazard Mitigation Assistance in Oklahoma

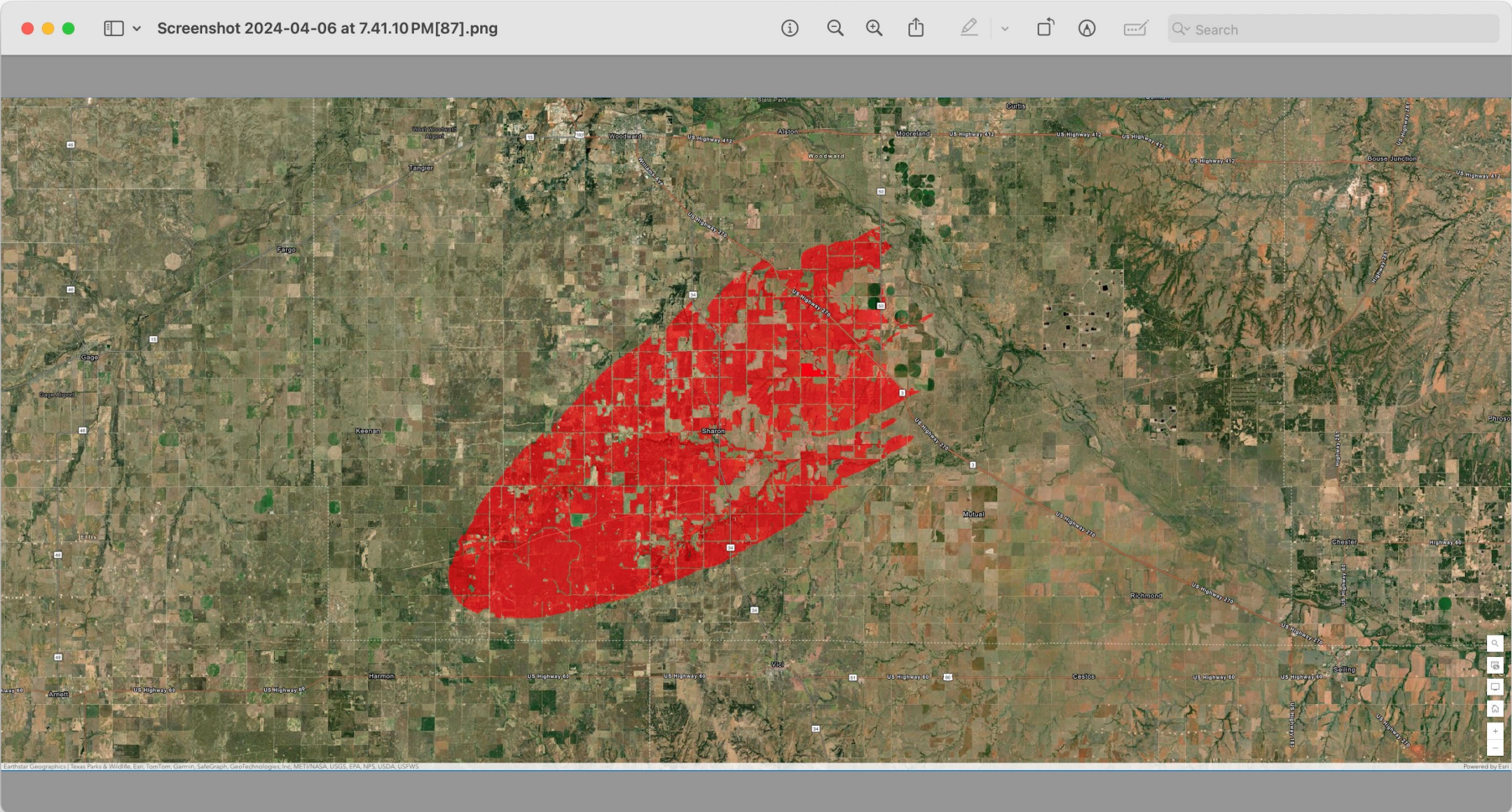
- Hazard Mitigation Grant Program Oklahoma's most thought of and primary funding source.
- Flood Mitigation Assistance overhaul after BW12.
- Shift by FEMA to focus on Resilience after Disaster Recovery Reform Act.



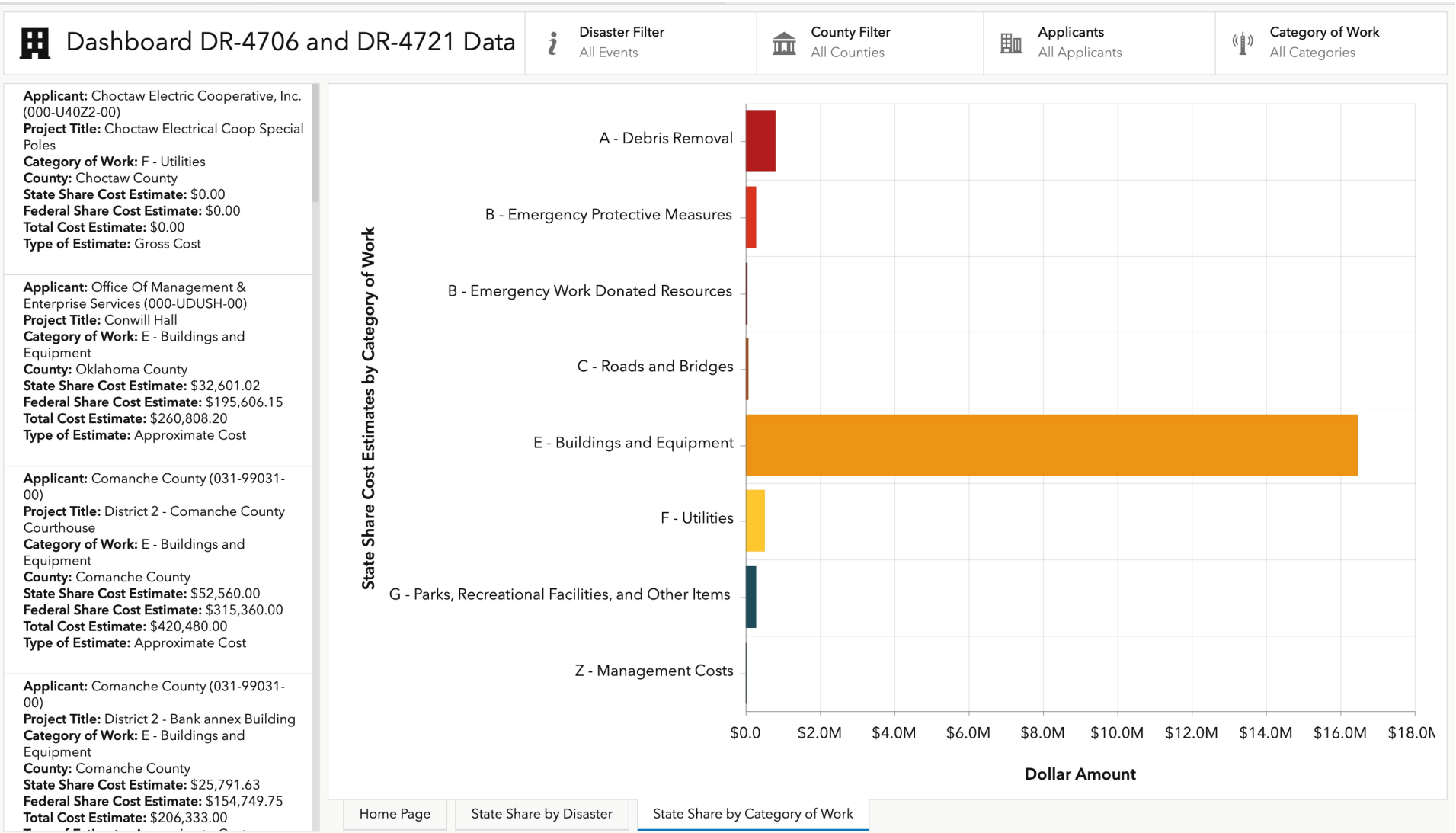
Mitigation Planning in Oklahoma



Data Driven Decisions



GIS Tools for Data Visualization



Driven by Data: Meeting Communities Where They Are

- Customizing Solutions to Meet Local Needs
- Utilizing Best Available Data
- Prioritizing Basic Information First
- Community Understanding and Participation
- Maintenance and Sustainability of Data Systems
- Quality Control - Garbage In, Garbage Out

Summary

- Our agency is starting from the bottom with use of technology
- Working to make the agency more operationally efficient
- Using national datasets to make high level decisions until Oklahoma specific information is developed
- Continuous improvement to build capability and capacity
- Considering predictive modeling tools for decision making
- Taking the burden off of local communities as needed

Questions?

Annie Mack Vest, CFM
State Director
annie.vest@oem.ok.gov
405-521-2481

