



# **FEMA Floodplain Mapping:**

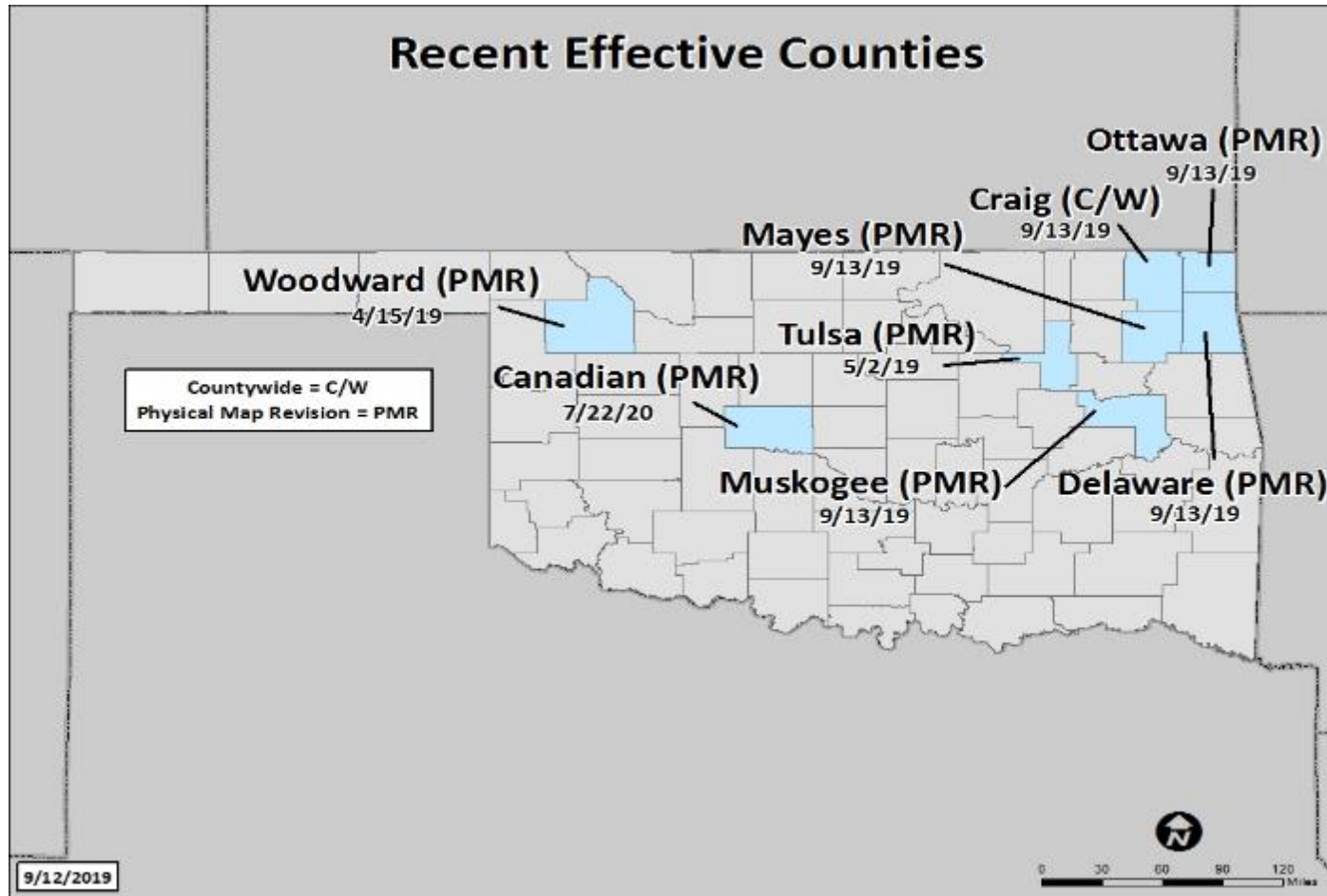
## **Status – Fall 2019**

OFMA Fall Conference  
September, 2019



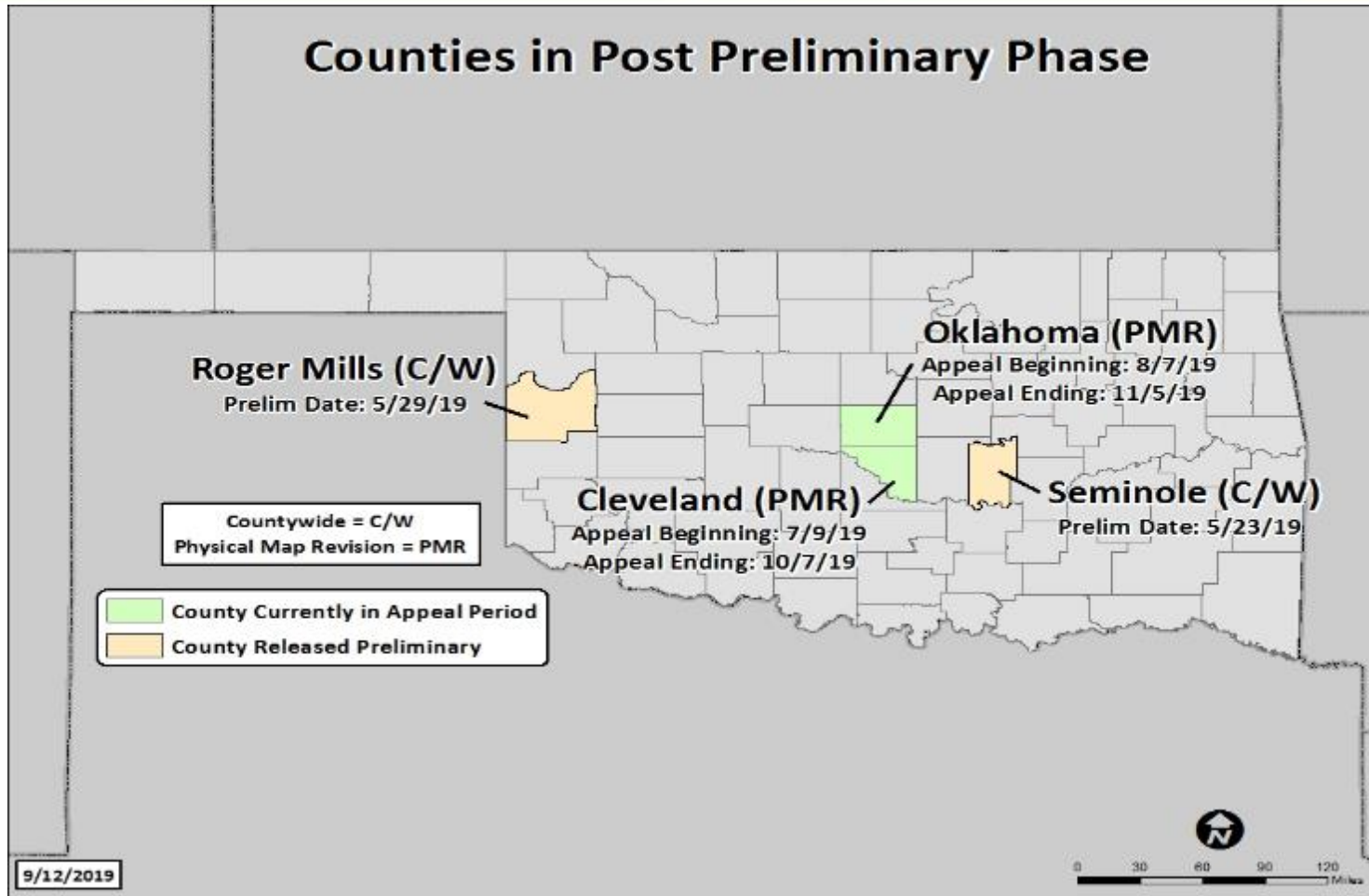
**FEMA**

# EFFECTIVE FIS/FIRM IN 2019/2020



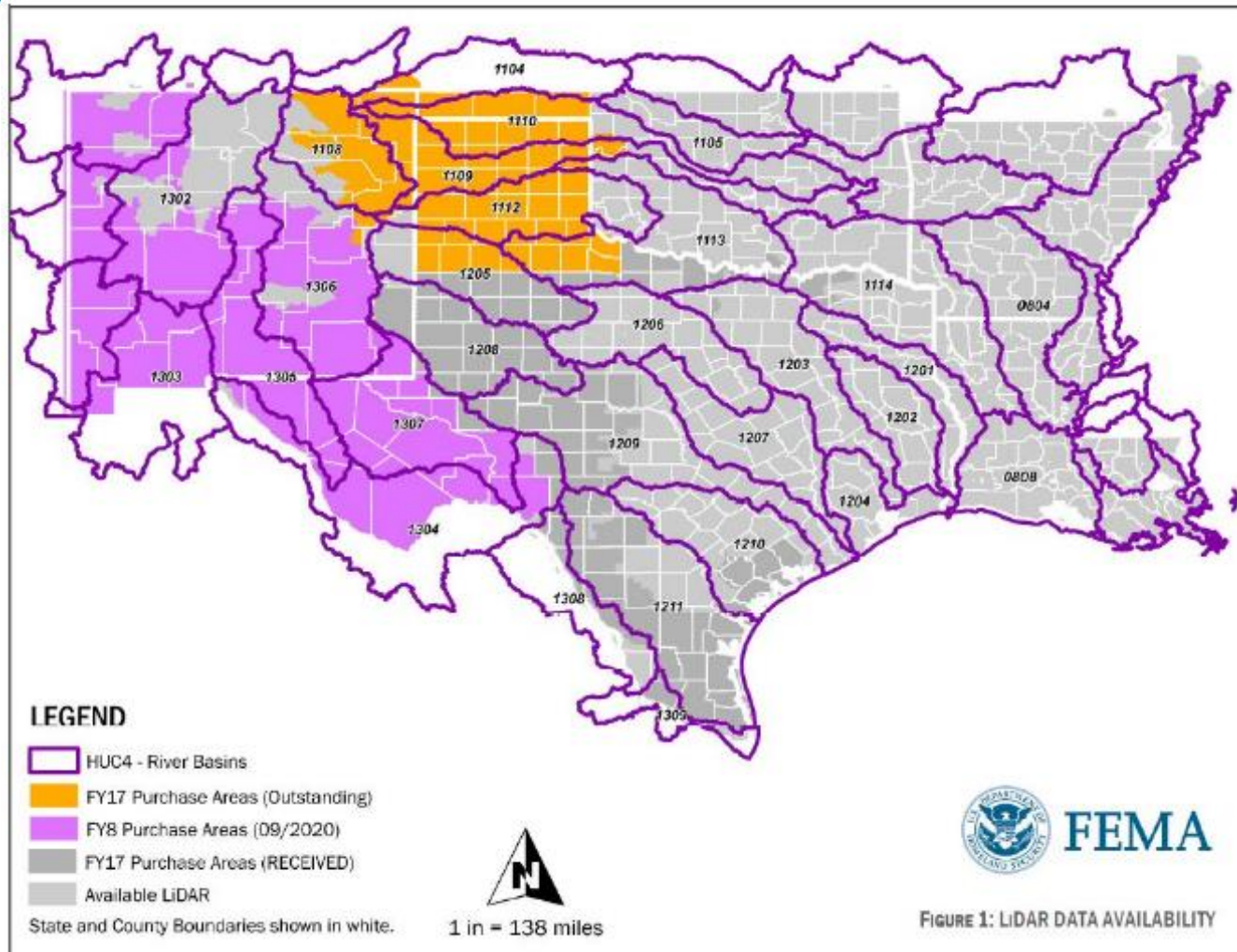
FEMA

# PRELIMINARY/ APPEALS FALL 2019



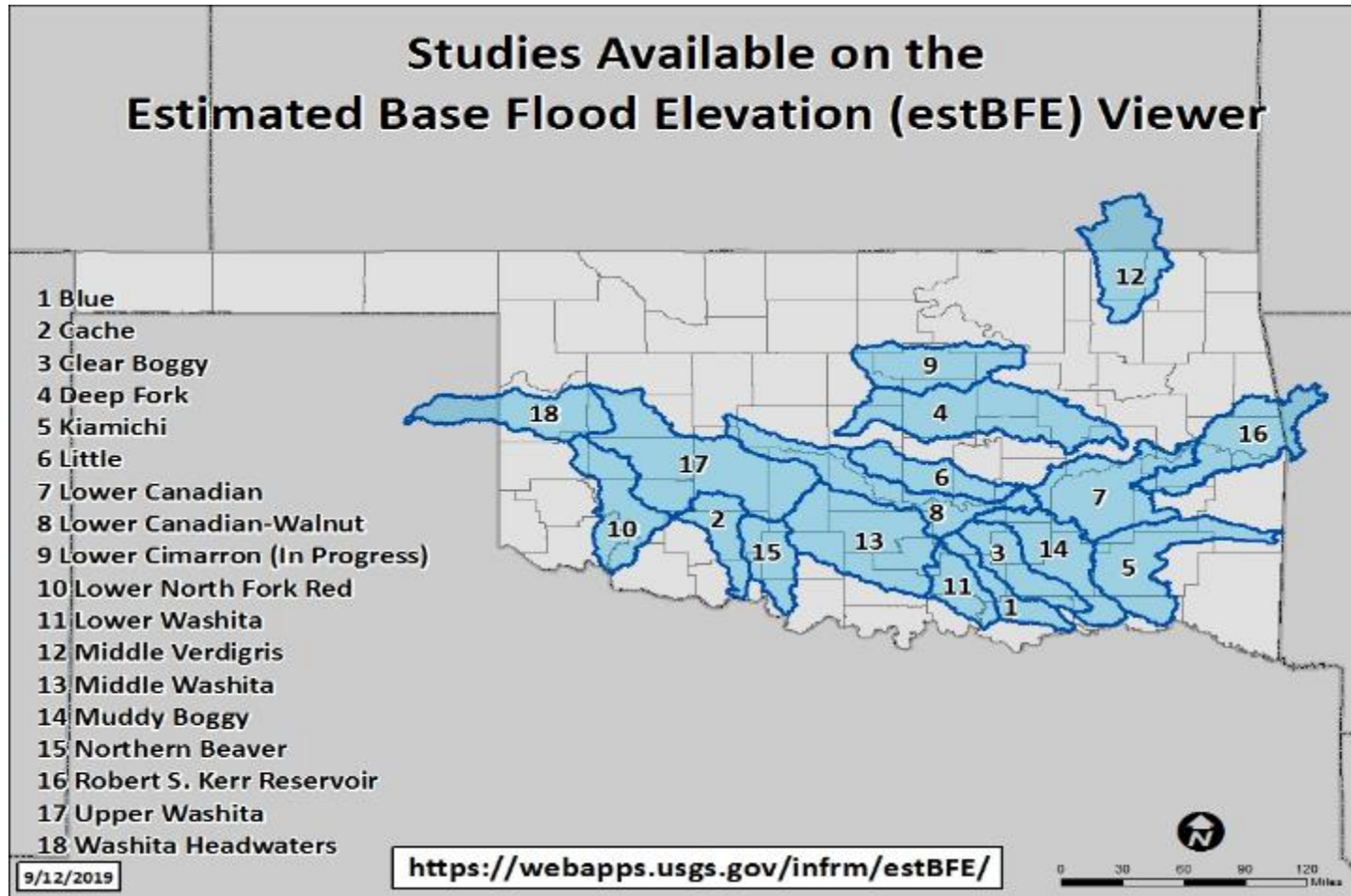


# LIDAR AVAILABLE



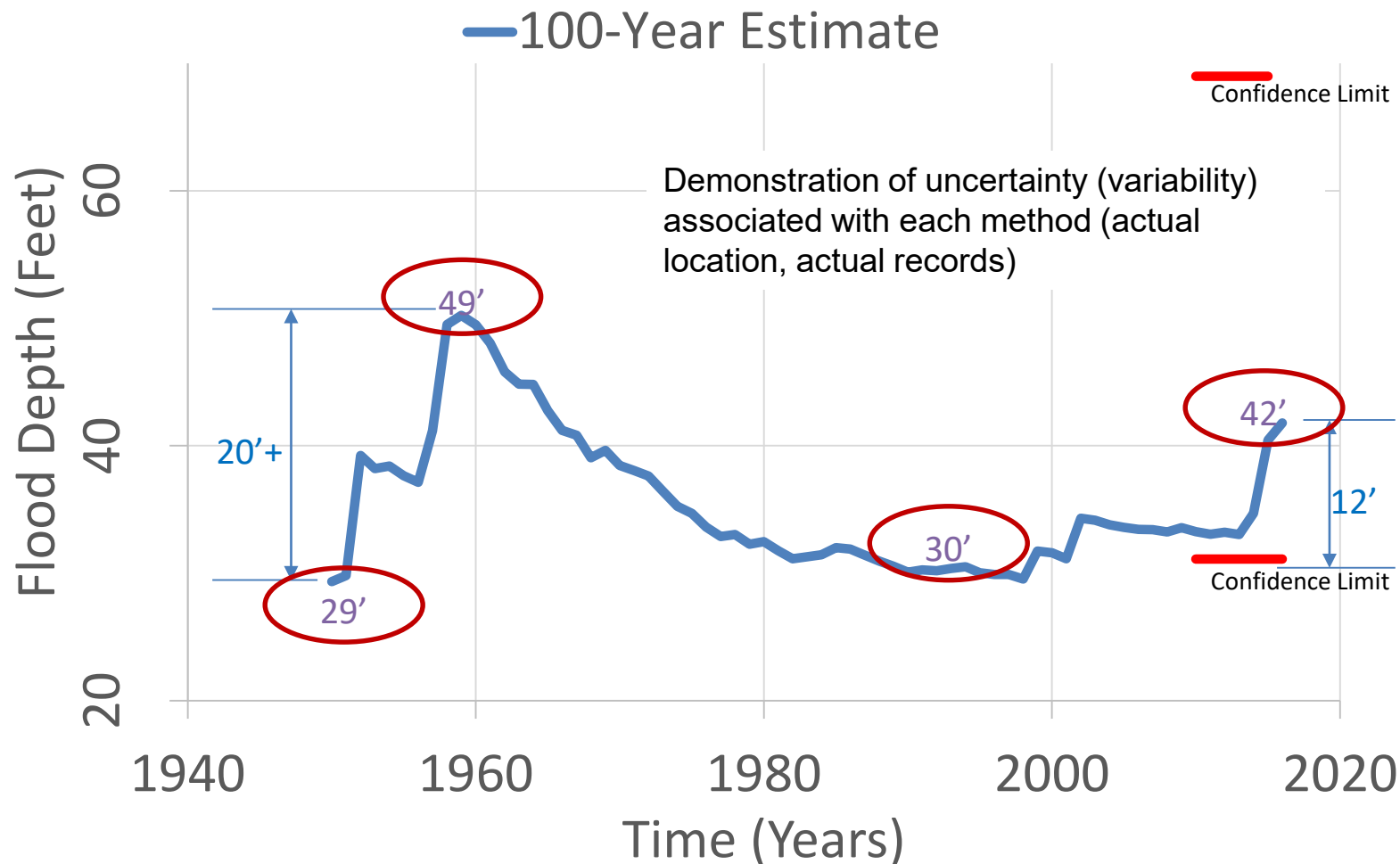
**FEMA**

# BASE LEVEL ENGINEERING DATA VIEWER



FEMA

# Climatic Data Update (NOAA Atlas 14)



# Flooding May Not Be Shown On FIRM

- ▶ Flood losses outside of designated floodplains may occur:
  - Local drainage swale, pipe network or detention pond size limitation (local drainage requirements are 25-year or less capacity)
  - Intense rainfall inundates and overtakes local drainage systems
  - Development activity with no FIRM update through LOMR
  - Minimal engineering assessment of development activity (no review of pre and post project conditions).





# Questions/Feedback/Reactions?



**FEMA**